

bathmate®
JUST ADD WATER

PRODUCT CATALOGUE



CONTENTS



WHAT IS BATHMATE?.....5

THE BATHMATE RANGE.....6

Hydro.....8
Hydromax.....9
Hydroxtreme.....11
Hydro Vibe.....13

BETTER SEX COLLECTION.....14

Vibe Bullets.....16
Anal Play.....17
Jelqing.....19
Cock Rings.....20
Delay Gel.....22
Lube.....22

ESSENTIALS COLLECTION.....24

Pumping Essentials.....26
Product Care.....29

QUALITY GUARANTEED.....31

WHAT IS BATHMATE?

Bathmate Hydropumps are revolutionary devices for total penile health and penis enlargement, for which they are acknowledged as a world leader.

Designed to be used in the bath or shower, they utilise the incredible power of water to support the natural erection of your penis.

In addition, regular use of the Bathmate Hydropump keeps the penis in prime condition making for rock hard, longer lasting erections and increased sexual pleasure.

Why use a Hydropump as opposed to an air pump?

This is a question we are asked a lot and to answer it we need to take a brief look at the science behind penis pumps. Penis pumps have been around for many years now, not only used by men to both increase the size of their penis and the quality of their erections but they have also been used for many years in the medical sector for helping men with Erectile Dysfunction. Prior to the invention of the Bathmate Hydropump all penis pumps operated using air, the Bathmate Hydropump was the first to use water inside the vacuum tube and is the acknowledged world leader in hydropump technology.

AIR

Under pressure, air is inconsistent and unpredictable. When air is removed from a vessel, an uneven vacuum is created due to the air being removed too quickly, which can lead to bruising, bending and bulging of the penis.

WATER

Water is consistent under pressure and can be drawn out of the vessel much slower than air. When water is expelled from the vessel, an even vacuum is created around the entire length and girth of the penis. This creates an even, solid cushion around the penis and allows for uniform expansion without any of the nasty side-effects associated with air pumps.

THE BATHMATE RANGE

HYDRO-SERIES 8

Hydro7

HYDROMAX-SERIES.....9

Hydromax3

Hydromax5

Hydromax7

Hydromax7 Wide Boy

Hydromax9

HYDROXTREME-SERIES.....11

Hydroxtreme3

Hydroxtreme5

Hydroxtreme7

Hydroxtreme7 Wide Boy

Hydroxtreme9

Hydroxtreme11

HYDRO-VIBE.....13



Hydro-Series: First Time User

Designed for the first-time user the Hydro-Series is the original worldwide patented Hydropump, and is used by thousands of men in over 120 countries.

Designed to be used in the bath or shower, it utilises the incredible power of water to increase the length and girth of the penis.



Hydromax-Series: Experienced User

The Hydromax-Series is the world's best selling penis pump with 1 million units sold to date.

Available in four sizes 5, 7, 7 Wide Boy and 9, the Hydromax-Series is the next stage of Hydropump evolution.

The new bellows pump system and valve give 35% more power than the Hydro-Series.



Hydroxtreme-Series: Gains Master

Take your hydrotherapy to a whole new level with the world's most powerful penis pump, providing the ultimate in hydro-technology.

Advancing Hydropump design with a new valve and detachable handball, the Hydroxtreme-Series is the Hydropump for the man who is serious about getting the very best from his pump. The Hydroxtreme-Series comes complete with all the accessories you could ask for.

HYDRO-SERIES

Product: **Hydro7**
Size: 5-7" / 12.5-17.5cm when erect



SKU: BM-H7-AB (Blue)
BM-H7-CC (Clear)
BM-H7-BR (Red)

HYDROMAX-SERIES

Product: **Hydromax3**
Size: Up to 3" / 7.5cm when erect



SKU: BM-HM3-AB (Blue)
BM-HM3-CC (Clear)
BM-HM3-BR (Red)

Product: **Hydromax5**
Size: 3-5" / 7.5-12.5cm when erect



SKU: BM-HM5-AB (Blue)
BM-HM5-CC (Clear)
BM-HM5-BR (Red)

Product: **Hydromax7**
Size: 5-7" / 12.5-17.5cm when erect



SKU: BM-HM7-AB (Blue)
BM-HM7-CC (Clear)
BM-HM7-BR (Red)

Product: **Hydromax7 Wide Boy**
Size: 5-7" / 12.5-17.5cm when erect



SKU: BM-HM7WB-AB (Blue)
BM-HM7WB-CC (Clear)
BM-HM7WB-BR (Red)

“
The Hydro7 is the original
Bathmate Hydropump and is
the perfect choice for the first-
time user
”

Product: **Hydromax9**
Size: 7-9" / 17.5-23cm when erect



SKU: BM-HM9-AB (Blue)
BM-HM9-CC (Clear)
BM-HM9-BR (Red)

“The Hydromax-Series is the next generation Hydropump and generates 35% more power than the Hydro-Series”

HYDROXTREME-SERIES

Product: **Hydroxtreme3**
Size: Up to 3" / 7.5cm when erect



SKU: BM-HX3-CC

Product: **Hydroxtreme5**
Size: 3-5" / 7.5-12.5cm when erect



SKU: BM-HX5-CC

Product: **Hydroxtreme7**
Size: 5-7" / 12.5-17.5cm when erect



SKU: BM-HX7-CC

Product: **Hydroxtreme7 Wide Boy**
Size: 5-7" / 12.5-17.5cm when erect



SKU: BM-HX7WB-CC

Product: **Hydroxtreme9**

Size: 7-9" / 17.5-23cm when erect



SKU: BM-HX9-CC

Product: **Hydroxtreme11**

Size: 9-11" / 23-28cm when erect



SKU: BM-HX11-CC

HYDRO-VIBE

Product: **Hydro Vibe**

- Key Features:
- USB Rechargeable
 - 2 x 10 Function Vibe Bullets
 - IPX7/100% Waterproof
 - Compatible with all Bathmate Hydropumps EXCEPT Hydroxtreme11



SKU: BM-VR-HV

Description

Pumping but not as you know it.

Bathmate has always been about gains, but for the first time with the addition of the Hydro VIBE, Bathmate pumps not only give you gains but they also create pleasure.

65 powerful vibration variations are achieved with the attachment of 2 x 10 speed IPX7 rated waterproof vibrating bullets, stimulating the penis in ways never before imagined.

Bathmate's product testers all reported increased erection quality as well as a more comfortable pumping experience. It is indeed the best of both worlds!

Take pumping to the next level.

“
The Hydroxtreme-Series is the most powerful Hydropump yet, generating the maximum safe pressure allowed for a body under pressure
”

BETTER SEX COLLECTION

VIBE BULLETS..... 16

- Vibe Chrome
- Vibe Black

ANAL PLAY..... 17

- Anal Training Plugs
- Anal Training Plugs VIBE
- Prostate Vibe
- Hydro Rocket Douche
- Anal Lube

JELQING..... 19

- Max Out

COCK RINGS..... 20

- Power Rings
- Vibe Rings

DELAY GEL..... 22

- Contol

LUBE..... 22

- Pleasure Lube

VIBE BULLETS

- Product:

Vibe Chrome
- Key Features:

- 10 Patterns
 - USB Rechargeable
 - IPX7/100% Waterproof



SKU: BM-V-CH

Description

Petite yet powerful, the Bathmate Vibe is IPX7 rated, meaning it is guaranteed to be 100% waterproof and gives the user the advantage of combining 2 natural therapies: hydro therapy and vibration therapy.

The combination of these 2 natural therapies make the Bathmate Vibe the natural choice for a healthier happier you.

Packed with 10 different intensity patterns, waves of pleasure will pass through your body, whether in the bedroom or in the bath/shower. Simple and sleek, the Bathmate Vibe is USB rechargeable, and comes with a 1 year peace of mind warranty.

- Product:

Vibe Black
- Key Features:

- 10 Patterns
 - USB Rechargeable
 - IPX7/100% Waterproof



SKU: BM-V-BL

ANAL PLAY

- Product:

Anal Training Plugs
- Key Features:

- Bathmate Vibe compatible
 - Tapered tip for easy insertion
 - Finger loop for easy removal
 - Ergonomically designed
 - Made from body-safe silicone
 - 1", 1.25", 1.5" diameter



SKU: BM-V-AP

Description

Bathmate Anal Training Plugs are the perfect trio to add a new dimension to your playtime.

Our silicone plugs have a tapered tip for easy insertion and range from 1-1.5" in width, so start off small and work your way up to mind-blowing pleasure.

Fancy an extra twist? Our VIBE bullet is perfectly designed to work in unison, simply slip through the finger loop and add some vibration to your anal exploring!

- Product:

Anal Training Plugs VIBE
- Key Features:

- Ergonomically designed
 - 10 Patterns
 - USB Rechargeable
 - IPX7/100% Waterproof
 - Tapered tip for easy insertion
 - Finger loop for easy removal
 - Made from body-safe silicone
 - 1", 1.25", 1.5" diameter



SKU: BM-V-VP

- Product: Prostate Vibe
- Key Features:
- 10 Patterns
 - USB rechargeable
 - IPX7/100% Waterproof
 - Ergonomically designed
 - Made from body-safe silicone
 - Dual stimulation for prostate & perineum



SKU: BM-PM-BR

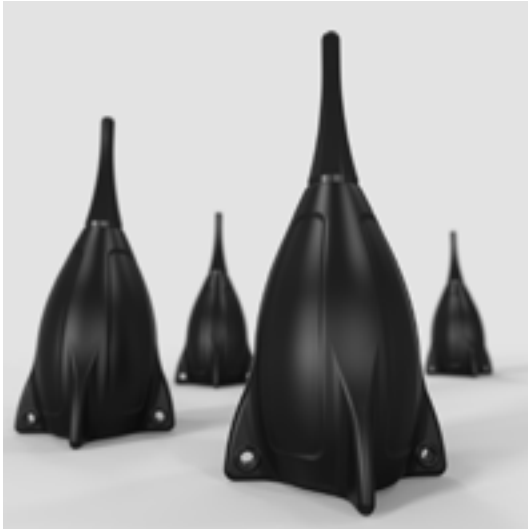
Description

Powered by our Bathmate VIBE bullet, the Prostate VIBE is designed for supreme prostate and perineum stimulation. The 10 function bullet connects to the soft touch silicone body, ergonomically designed to give you a safe, comfortable fit.

Shaped for both beginners and the more experienced user, Prostate VIBE adds a new dimension to your play session whether alone or with a partner.

As an added bonus the VIBE Bullet can be removed from the prostate arm for exploring a multitude of erogenous zones.

- Product: Hydro Rocket Douche
- Key Features:
- 325ml capacity
 - Non-return valve prevents water contamination
 - Fully detachable nozzle for easy cleaning
 - Suction pad for hanging
 - Made from skin safe tested materials



SKU: BM-HR

Description

The Bathmate Hydro Rocket is a personal hygiene device, designed to be used in the shower as a compliment to your personal cleansing routine.

With an ergonomic, easy-squeeze 325ml capacity bulb and innovative non-return valve, you can be sure of a thorough hygienic clean.

The fully detachable nozzle makes cleaning your Hydro Rocket simple. Supplied with a discreet bag for safe storage after use.

The Hydro Rocket is made using only skin-safe tested materials, ensuring safe, hygienic use, so you can be assured of clean, confident play.

- Product: Anal Lube
- Key Features:
- Formulated specifically for use on anal toys
 - Water based
 - Super Thick
 - Odour/taste free
 - Non-Sticky
 - Long Lasting



SKU: BM-AL-93

Description

Premium Water Based Lubricant.

Bathmate Anal Lubricant is a personal lubricant specifically designed for anal play. Intended to moisturise and lubricate, it enhances the ease and comfort of play whether with toys or partners. Compatible with natural rubber latex, polyisoprene and polyurethane condoms for safe play.

JELQING

- Product: Max Out
- Key Features:
- Made from Testostomax™
 - Natural therapy technique
 - Skin-safe tested



SKU: BM-MO-100

Description

Max Out 'jelqing enhancement serum' sets the standard against which all other jelqing lotions will be judged.

Bathmate development engineers have worked tirelessly to ensure that only the finest quality ingredients are used in the final formulation.

The TESTOSTOMAX™ formula works in harmony with the body, maximising results from using the Bathmate Hydropump.

Get bigger quicker.

COCK RINGS

- Product:** Power Rings
- Key Features:**
- 3 different models: Gladiator, Barbarian & Spartan
 - Made from Elastomex™
 - Phthalate Free



Gladiator

SKU: BM-CR-GL (Gladiator)
BM-CR-BA (Barbarian)
BM-CR-SP (Spartan)

Description

Phthalate free & skin-safe, Bathmate power rings are made with Elastomex™, our unique trademarked blend of TPE & TPR.

Designed to be the toughest & most flexible male rings on the market our power rings boost your erection and enhance your performance.

Bathmate power rings give you the warrior’s edge.



Barbarian



Spartan

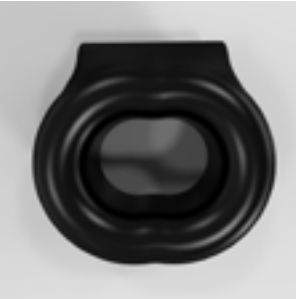
- Product:** Vibe Rings
- Key Features:**
- 4 different models: Tickle, Strength, Stretch & Eight
 - Powerful 3-speed vibrating bullet
 - USB rechargeable
 - New & improved Elastomex™ formula
 - Phthalate Free



Tickle



Strength



Stretch



Eight

SKU: BM-VR-TI (Tickle)
BM-VR-SG (Strength)
BM-VR-ST (Stretch)
BM-VR-EG (Eight)

Description

Our new and improved Elastomex™ formula, combined with a small yet powerful 3-speed vibrating bullet allows you and your partner to feel every vibration. Designed with enhanced stimulation in mind, the Bathmate Vibe Ring range will boost your power, performance and pleasure.

The Tickle is Bathmate’s most intimate ring yet. With its unique texture, designed for intense stimulation for both you and your partner, it can be worn facing upwards or downwards to hit the desired spot. **Internal diameter: 0.8”/22mm**

The unique construction of **The Strength** heightens pleasure by constricting the flow of blood, making for bigger, longer lasting, rock hard erections. The increased sensitivity of the penis will intensify your orgasm, leaving you and your partner more satisfied than ever before. **Internal diameter: 1.4”/36mm**

The Eight is designed to heighten pleasure by constricting the flow of blood, making for bigger, longer lasting, rock hard erections. The increased sensitivity of the penis will intensify your orgasm, leaving you and your partner more satisfied than ever before. **Internal diameter: 0.9”/24mm**

The Stretch is designed to imitate the tightening sensation felt just prior to climax. By resisting the natural contraction of the scrotum the Stretch provides you with a longer lasting, more powerful orgasm. **Internal diameter: 0.9-1.3”/24-35mm**

DELAY GEL

- Product: Control
- Key Features:
- Specifically designed for safe use on sensitive skin
 - Alcohol and perfume free
 - Free from parabens
 - Dermatologically tested
 - 100% biodegradable



SKU: BM-CO-7

Description

Unlike any other delay gel on the market, Bathmate Control is made completely from natural ingredients. Not only that, it stays active for up to 4 hours so it can be applied a long time before any sexual intimacy, meaning you can be confident of being in full control when you most need it.

Control has been specially formulated to help delay your orgasm. It is non-transferable between partners so only you get the effects, which means sexual encounters will never leave you or your partner disappointed.

The effects of Control are not just about staying power, it has the added bonus of giving you a greater build up during sexual foreplay, resulting in the ultimate orgasm.

LUBE

- Product: Pleasure Lube
- Key Features:
- Compatible with natural rubber latex, polyisoprene, and polyurethane condoms
 - Water based
 - Odour/taste free
 - 93ml



SKU: BM-LU-118

Description

Bathmate Lube is a personal lubricant, for penile and/or vaginal application, intended to moisturise and lubricate, to enhance the ease and comfort of intimate sexual activity and supplement the body's natural lubrication.

This product is compatible with natural rubber latex, polyisoprene, and polyurethane condoms.



ESSENTIALS COLLECTION

PUMPING ESSENTIALS.....26

Trim
Shower Strap
Measuring Gauge
Comfort Inserts
Cushion Rings
Comfort Pads
Valve Packs

PRODUCT CARE.....29

Toy Cleaner
Anal Toy Cleaner
Cleaning Brush
Cleaning Kit
Storage Case





PUMPING ESSENTIALS

Product: **Trim**

- Key Features:
- USB Rechargeable
 - 2 hours of cordless use from 90 minutes of charging
 - Charging indicator light
 - Stainless steel cutting blades for a sharp and precise cut
 - 3, 6, 9 & 12mm cutting heads for facial and body hair
 - Ergonomically designed for a comfortable grip



SKU: BM-TR

Description

Engineered with Bathmate users in mind, the Trim enables you to maximise the full potential of your Hydropump.

Ensuring that your pubic area is well trimmed will help facilitate the vacuum seal against the pelvic seat, generating more suction and allowing the Hydropump to reach its full potential.

With a 3-12mm cutting range, and a precision blade, the Bathmate Trim’s ergonomic design is as versatile as it is simple to use.

Included in the kit, as well as a full-size trimmer with 4 different guide combs, is a precision trimmer. The precision trimmer comes with an adjustable guide comb with 4 different lengths, and we recommend number 3 as the ideal cutting length to create a great seal.

The Trim is USB rechargeable, has been extensively tested and comes with a 1-year peace of mind warranty.

Product: **Shower Strap**

- Key Features:
- Makes it easy and comfortable to use any of our pumps in the shower



SKU: BM-SS

Product: **Comfort Inserts**

- Key Features:
- Provides extra comfort when using the Hydromax & Hydroxtreme series



- SKU: BM-HM5-RCI (Hydromax5)
BM-HM7-RCI (Hydromax7)
BM-HM9-RCI (Hydromax9)
BM-H11-RCI (Hydroxtreme11)

Product: **Measuring Gauge**

- Key Features:
- Allows accurate measurement of the length and girth of the penis



SKU: BM-SB

Product: **Cushion Rings**

- Key Features:
- Enhances the users comfort when using the Hydromax & Hydroxtreme-series

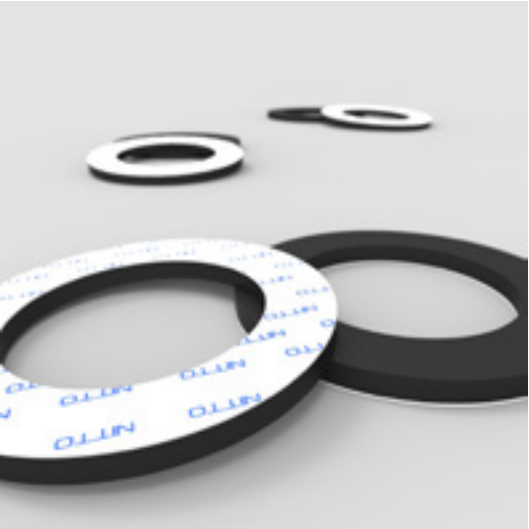


- SKU: BM-HM5-CP (Hydromax5)
BM-HM7-CP (Hydromax7)
BM-HM9-CP (Hydromax9)
BM-HM11-CP (Hydroxtreme11)

Product: Comfort Pads

Key Features:

- Provides extra comfort when using the Hydro-Series



SKU: BM-H7-RCP

Product: Replacement Valves

Key Features:

- Replacement valves for the Hydro, Hydromax and Hydroxtreme Series



SKU: BM-HVP (Hydro)
BM-HMVP (Hydromax)
BM-HMXVP (Hydroxtreme)

PRODUCT CARE

Product: Toy Cleaner

Key Features:

- Designed for use on all sex toys
- Safe to use on latex & silicone
- Alcohol & paraben free



SKU: BM-CL-100

Description

Bathmate’s misting toy cleaner is an alcohol-free spray that is designed for use on all sex toys and is safe to use on latex and silicone for a thorough hygienic clean.

Complete with a mild lemon scent that is pleasant, but not overpowering, this gentle formula makes an ideal cleaning product for cleansing your favourite sex toys made of latex, silicone and rubber.

Use this spray on your sex toys to ensure a perfect clean and utmost levels of hygiene.

Product: Anal Toy Cleaner

Key Features:

- The world’s only toy cleaner formulated specifically for use on anal toys
- Complete removal of faecal matter
- Alcohol & paraben free



SKU: BM-AC-100

Description

Bathmate’s Anal Toy Cleaner is the world’s first toy cleaner that is formulated specifically for use on anal toys. The alcohol-free formula is free from parabens and contains anionic surfactants for the complete removal of faecal matter.

Combined with its easy-to-use ergonomic spray bottle it really is the perfect choice for keeping your anal toys in prime condition.

Product: **Cleaning Brush**

Key Features: • Specially designed to fit the shape of all our Hydropumps



SKU: BM-CH

Product: **Capsule Case**

Key Features: • High quality storage and travel case

 • Provides extra protection for your Bathmate Hydropump



SKU: BM-CAP

Product: **Cleaning Kit**

Key Features: • Combines a selection of accessories, making it easier to keep your Bathmate fully clean.



SKU: BM-CK

PREMIUM QUALITY GUARANTEED

All Bathmate Hydropump products are manufactured in our very own state-of-the-art factory in the UK from specially selected skin-safe, phthalate free and medical grade materials.

Each component undergoes rigorous testing before full assembly to ensure that every product that leaves our factory meets our exact specifications.

In addition, each range has undergone a custom designed dermatological testing study undertaken by a world renowned specialist clinic. Princeton Consumer Research have conclusively passed our Hydropumps as “Clinically proven to be safe for use on the intimate genital area”

You can be assured that Bathmate Hydropumps are safe to use.



bathmate®
J U S T A D D W A T E R

Bathmate® and Hydromax® are Worldwide Registered Trademarks.

Bathmate: EU 005210244, USA 3789395, China 10221454 Hydromax: EU 010390904,
USA 4303440, INT 1131156 Design Registration: EU 002111069/2, USA 29/450986
Patent nos: UK 2418686 EU 1799162, USA 7651463, AU 2005278999

© Worldwide copyright protection - DX Products Ltd

